

Mein Heimathafen 

**PADERBORN  
LIPPSTADT**  
AIRPORT



# PAD CARGO

Fast, convenient, inexpensive freight transport  
(24/7) – from Paderborn-Lippstadt Airport to  
anywhere in the world

[cargo.airport-PAD.com](http://cargo.airport-PAD.com)

Fast and individual:  
Welcome to PAD Cargo!

We connect 77,000 companies with the world. We are the point of contact for enterprises from three German states and one of the strongest economic regions in Germany, with a high level of industrial density. Our central location, logistical know-how and good transportation connections mean that Paderborn-Lippstadt Airport is one of the region's most important logistics sites.

### The airport – Your advantages at a glance

Paderborn-Lippstadt Airport is strategically located where three German states – North Rhine-Westphalia, Lower Saxony and Hesse – come together. Our cargo service offers many advantages:

- 24/7 availability
- Unrestricted air traffic (our operations are not slot-oriented)
- Rapid turnaround
- Highly competitive fee structure
- Our own fuel supply (no minimum-quantity surcharge)
- Very good connections

Our service is always tailored to your requirements and has just one goal: to ensure that your freight arrives quickly, safely, and cost-effectively.



## Location and connections

The airport's cargo services are increasingly attracting companies from other regions in addition to our customers in Eastern Westphalia.

**Benefit from fast access:** Your freight arrives here in a maximum of 2.5 hours and can be sent on to its destination.

### Paderborn-Lippstadt Airport is optimally connected!

The **A33 autobahn** connects the A30 to the north with the A44 to the south and thus serves the entire distance from the Netherlands across northwestern Germany and all the way to the states of Saxony and Thuringia.

Exit: A 33 autobahn (Bielefeld-Brilon), Salzkotten interchange (27).

The **A44 autobahn** runs from the Belgian border near Aachen to Kassel in Hesse.

Exit: A 44 autobahn (Dortmund-Kassel), Bueren interchange (60).

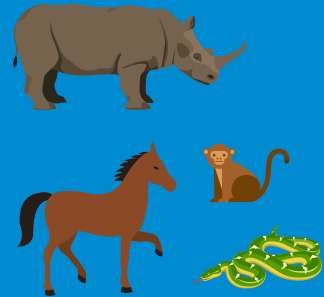


## Overview of our services

A seamless, perfectly functioning logistics chain is essential to delivering your air freight safely and quickly to its destination. In the process, we see ourselves as a service provider to freight forwarders and airlines alike.

## Freight & Services

Experienced experts and our technical equipment enable us to handle nearly any kind of freight at Airport PAD. We are also happy to find individual solutions for bulky or very heavy freight. We regularly ship the following kinds of freight:



### Animals

We are experienced in animal transports and ensure high-quality veterinary care. Your animal's welfare and safety while in our safekeeping is our top priority.



### DGR/Hazardous goods

We are able to handle hazardous goods, carry out commissioning, and produce all the necessary transport documents.



### Airmail

Thanks to state-of-the-art technology and an outstanding infrastructure, we and our partners enable rapid, reliable processing of airmail and express shipments.



### Loading

We provide everything to ensure a smooth loading process on-site. Forklifts with a loading capacity of up to 8 tons bring your freight on the runway. Our biggest Main Deck Loader can transport up to 20-ft pallets and -containers. The maximum lifting capacity of the loader is 12,000 kg, with a maximum height of 5,350 mm.

### Customs

Our customs clearance service is available to you 24/7. Please do not hesitate to contact:

Customs office at  
Paderborn-Lippstadt Airport  
Flughafenstraße 33  
33142 Bueren-Ahden  
Germany  
Phone: +49 (0) 2955 77-375  
www.zoll.de



### Trucking

Paderborn-Lippstadt Airport is a regulated agent for the transport of air freight by truck. Your freight is secured, sealed, and reloaded here, with the result that it is classified as air freight and can, for example, be directly loaded at Frankfurt Airport. Lufthansa Cargo has its own station at Paderborn-Lippstadt Airport. Standard freight, express freight and hazardous goods can all be processed and sealed here and delivered by truck to the hub in Frankfurt in scheduled service using the Lufthansa flight number. The Lufthansa Cargo Station, which processes air freight for trucking to Frankfurt, is open Wednesday through Friday from 6 a.m. to 10:00 p.m..

### Facts and figures

- **Runway length:** TORA 2,180 m/TODA 2,240 m
- **Runway width:** 45 m
- NDB/DME approach/ILS 06/24 CAT I
- GPS approach
- **Runway/taxiway surface:** PCN 70 F/B/X/T ASPH
- 24/7 operation
- **Aircraft maintenance:** German Aircraft Maintenance & PAD Aviation Technics
- Own fuel supply

### Other technology

#### X-ray: HI-SCAN 145180 2-is

With its tunnel dimensions of 1,450 mm width and 1,800 mm height, the HI-SCAN 145180-2is is especially well suited to x-raying air freight on standardized pallets (Euro, UK and U.S.). This device can x-ray freight with a weight of up to 1.2 tons.



#### Detector: IONSCAN 500DT

Our detector is able to identify explosives and narcotics during a single analysis as well as detect a large number of substances. This ensures that our detection procedures are both secure AND fast.



#### GPU, ASU, heating unit

The airport has all the necessary equipment in the right quantities to secure your transport and ensure the maintenance of any necessary temperature levels: ground power units (GPU) and air start units (ASU) supply parked vehicles, while heating units keep the inside climate at an optimal level.



### Technical facts

- **Airfield elevation:** 699 ft.
- **Airfield reference temperature:** 18,6 ° C
- **Fuel types:** Jet A1, AVGAS 100LL
- **Freight handling/screening:** available 24h
- **Customs procedures:** available 24h
- Freight hangar (including storage option) close to the ramp
- Regulated agent (certified by the German Federal Aviation Office)



# Strong partners for your logistics

## Lufthansa Cargo

Lufthansa Cargo is one of the world's leading providers of air freight transport. Its route network includes around 300 destinations in about 100 countries around the globe, and the company can draw on its own cargo aircraft as well as the freight capacity of Lufthansa's and Austrian Airlines' passenger aircraft in addition to trucks. Most of Lufthansa Cargo's freight business is transshipped at Frankfurt Airport. The company maintains a station at Paderborn-Lippstadt Airport for the transport of air freight by truck to Frankfurt.



[www.lufthansa-cargo.com](http://www.lufthansa-cargo.com)

## Bright Flight

Bright Flight is a young and quickly growing Bulgarian airline. It is completely EU-certified and an EASA-licensed provider of flight services.



[www.bright-flight.eu](http://www.bright-flight.eu)

## BinAir

This German charter carrier is headquartered in Munich and based at Munich Airport. It offers both passenger flights and freight transport.



[www.binair.eu](http://www.binair.eu)



# Locally networked, globally active: your contact at PAD CARGO

Our cargo service is available 24 hours per day – even for large freight or special products.

## Address

Flughafen Paderborn/Lippstadt GmbH  
Flughafenstrasse 33  
33142 Bueren  
Germany

## Contact

Operations (24/7)  
Phone: +49 (0) 2955 77 230

Klaus Marx  
Vice President Sales & Marketing  
Phone: +49 (0) 29 55 – 77 201  
E-Mail: [marx-k@airport-pad.com](mailto:marx-k@airport-pad.com)



Flughafen Paderborn/Lippstadt GmbH  
Flughafenstraße 33  
D-33142 Bueren  
Phone: +49 (0) 2955. 77-0  
Fax: +49 (0) 2955. 77-319  
E-Mail: [info@airport-pad.com](mailto:info@airport-pad.com)  
Web: [www.airport-pad.com](http://www.airport-pad.com)

**PADERBORN  
LIPPSTADT**  
A I R P O R T



Last revision: Juni 2016  
Subject to change.